

## V5 Legs for Neje Master 1 & 2 / Ortur Master 1

### Disclaimer 😊

These legs offer a great range of height but stability may suffer at high altitudes.

Stability is variable depending on the engraving, the engraver and the speed it's running at.

Slowing down the speed and securing the legs to a spoil board or workbench greatly improve the stability.

Please see Page 2 - Improving stability.



### Attaching the legs to the engraver

Push the included bolts through the holes on the engraver ends and secure the legs using the washers and wingnuts as shown.



### Adjusting the altitude

Loosen the locking wheel half a turn or so until you can slide the engraver up or down the leg to the desired height.

Once there – turn the wheel clockwise to secure.

Leftie loosie, rightie tighty 😊



## Improving Stability

Attaching the legs to your workbench or a spoil board is probably the biggest improvement you can make for stability.

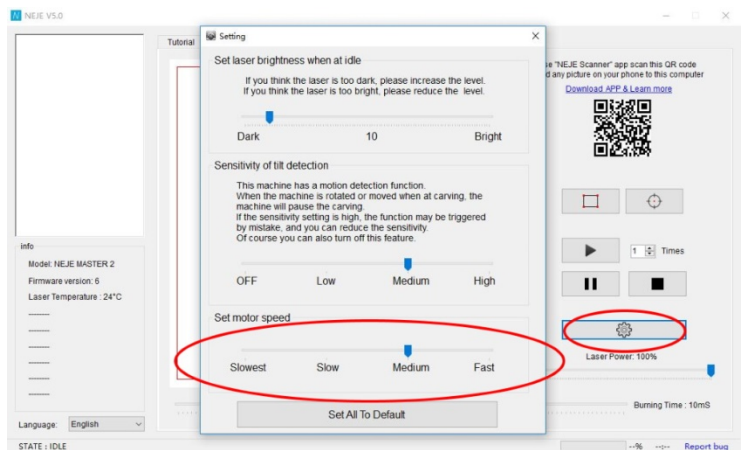


## Speed and software settings

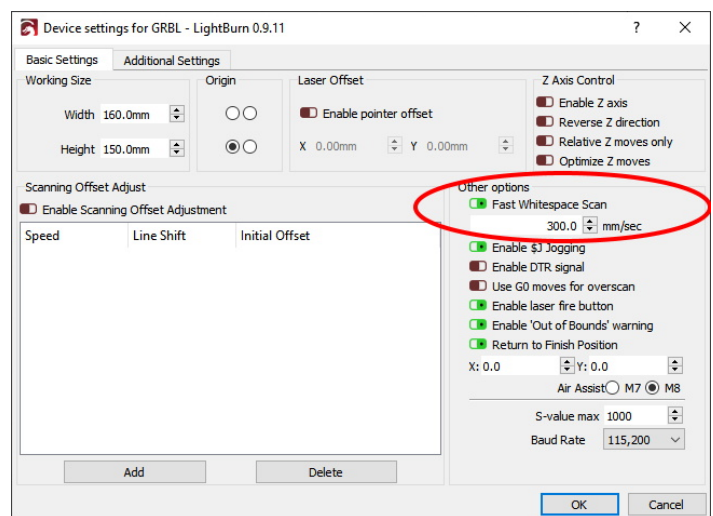
The Neje software has a speed setting which adjusts the speed during travel moves. Reducing this speed has a significant effect on the stability. Not tried this on the LaserMaster 2, the LaserMaster 1 on the 'Slow' setting works fine at full altitude for me.

For the Neje V5 software (LaserMaster2) click the gear wheel to open the 'Setting' dialogue and choose a slower speed.

The Neje V4 software (LaserMaster1) is very similar but only offers two choices: Fast or Slow.



With LightBurn you can either disable 'Fast Whitespace Scan' in 'Device Settings' or reduce the speed (this only affects travel between burn points)



You can also lower the power and speed settings for the burn itself. During testing I found the setting changes above improved the stability enough.